



DATE	REVISIONS	BY

DRAWING ALTERATION
 Note: It is a violation of law for any person, unless they are acting under the direction of a licensed professional engineer, architect, landscape architect or land surveyor to alter an item in any way. If an item bearing the stamp of a licensed professional is altered, the altering engineer, architect, landscape architect or land surveyor shall stamp the document and include the notation "altered by" followed by their signature, the date of such alteration, and a specific description of the alteration.

BY: JONATHAN W. OTTMAN
 DATE: 01/22/2026



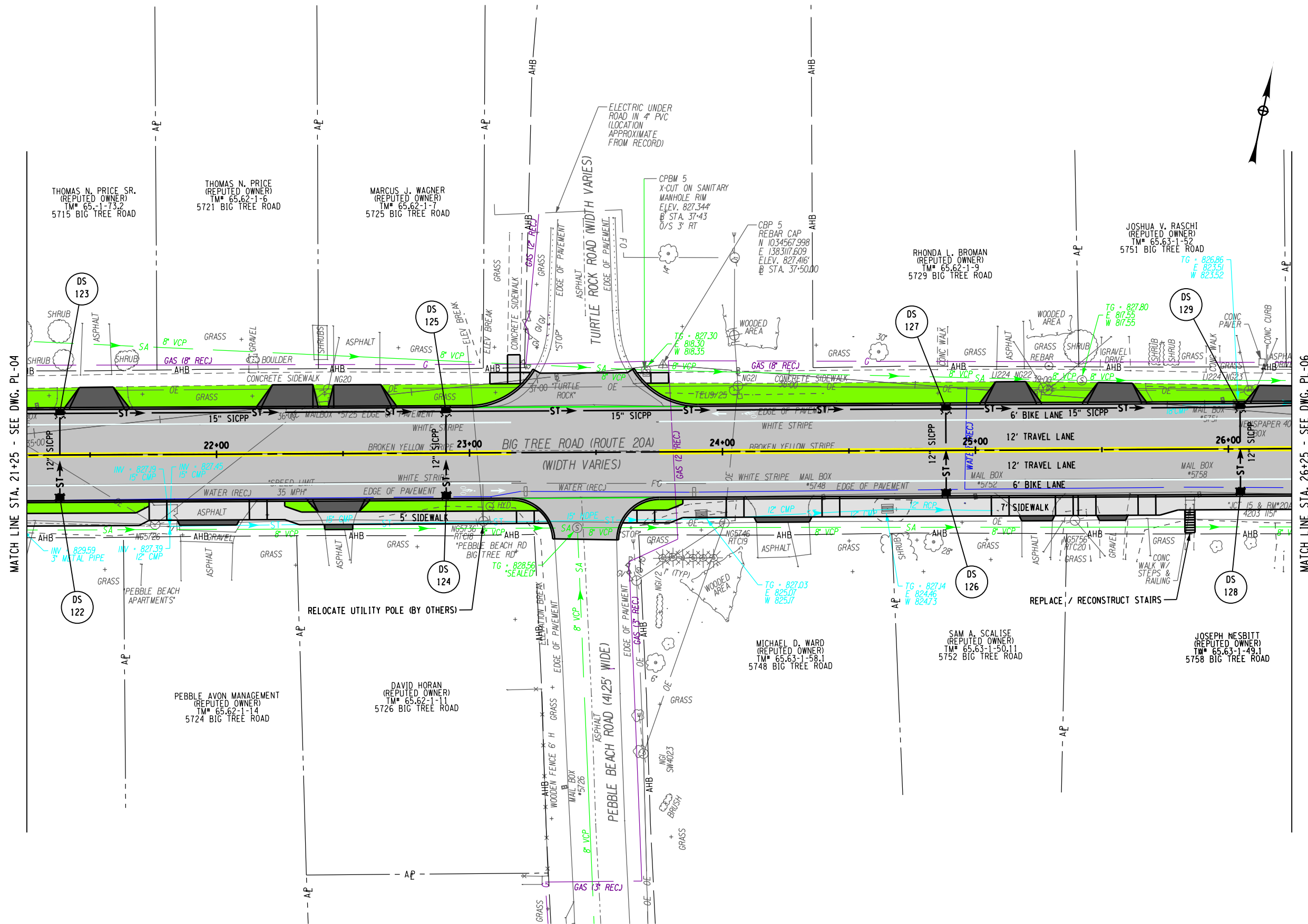
280 East Broad St., Suite 170
 Rochester, New York 14604
 (585) 385-7417
 luengineers.com

PROJECT:
 BIG TREE ROAD
 PEDESTRIAN IMPROVEMENT
 PROJECT
 PIN 4761.50

CLIENT:
 TOWN OF LIVONIA
 36 Commercial Street
 Livonia, NY 14487

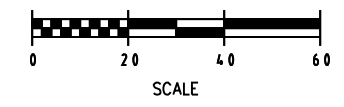
DRAWING TITLE:
 PRELIMINARY
 ROADWAY PLANS

DESIGNED BY: JWO	SCALE: AS NOTED
DRAWN BY: HJL	DATE: JANUARY 2026
CHECKED BY: JRM	PROJECT No. 50631-01
SHEET 7 OF 11	DRAWING No. PL-05



MATCH LINE STA. 21+25 - SEE DWG. PL-04

MATCH LINE STA. 26+25 - SEE DWG. PL-06



FILE NAME = J:\Projects\50631_Town of Livonia\50631-01 Big Tree Road Pedestrian Improvements Project\Cadd\Preliminary Design\Preliminary Roadway Plan and Profile.dgn
 DATE = 1/19/2026 TIME = 10:26:37 AM
 USER = Jotman

BIG TREE ROAD H.C.L. DATA			
POINT	STATION	NORTHING	EASTING
CURVE No. 2			
PC	28+42.75	1034467.97	1383580.49
PI	28+67.51	1034637.90	1383604.70
CC		1033459.68	1383833.63
PT	28+92.26	1034642.12	1383629.09
DELTA	2° 21' 50" RT.	EXTERNAL	0.26 FT
RADIUS	1200 FT	LENGTH	49.51 FT
DEGREE	4° 46' 29"	TANGENT	24.76 FT
AHEAD TANGENT DIRECTION		80° 11' 09"	
BACK TANGENT DIRECTION		77° 49' 19"	

BIG TREE ROAD H.C.L. DATA			
POINT	STATION	NORTHING	EASTING
POE	31+42.27	1034684.73	1383875.44
BACK TANGENT DIRECTION		80° 11' 09"	



DATE	REVISIONS	BY

DRAWING ALTERATION
 Note: It is a violation of law for any person, unless they are acting under the direction of a licensed professional engineer, architect, landscape architect or land surveyor to alter an item in any way. If an item bearing the stamp of a licensed professional is altered, the altering engineer, architect, landscape architect or land surveyor shall stamp the document and include the notation "altered by" followed by their signature, the date of such alteration, and a specific description of the alteration.

BY: JONATHAN W. OTTMAN
 DATE: 01/22/2026

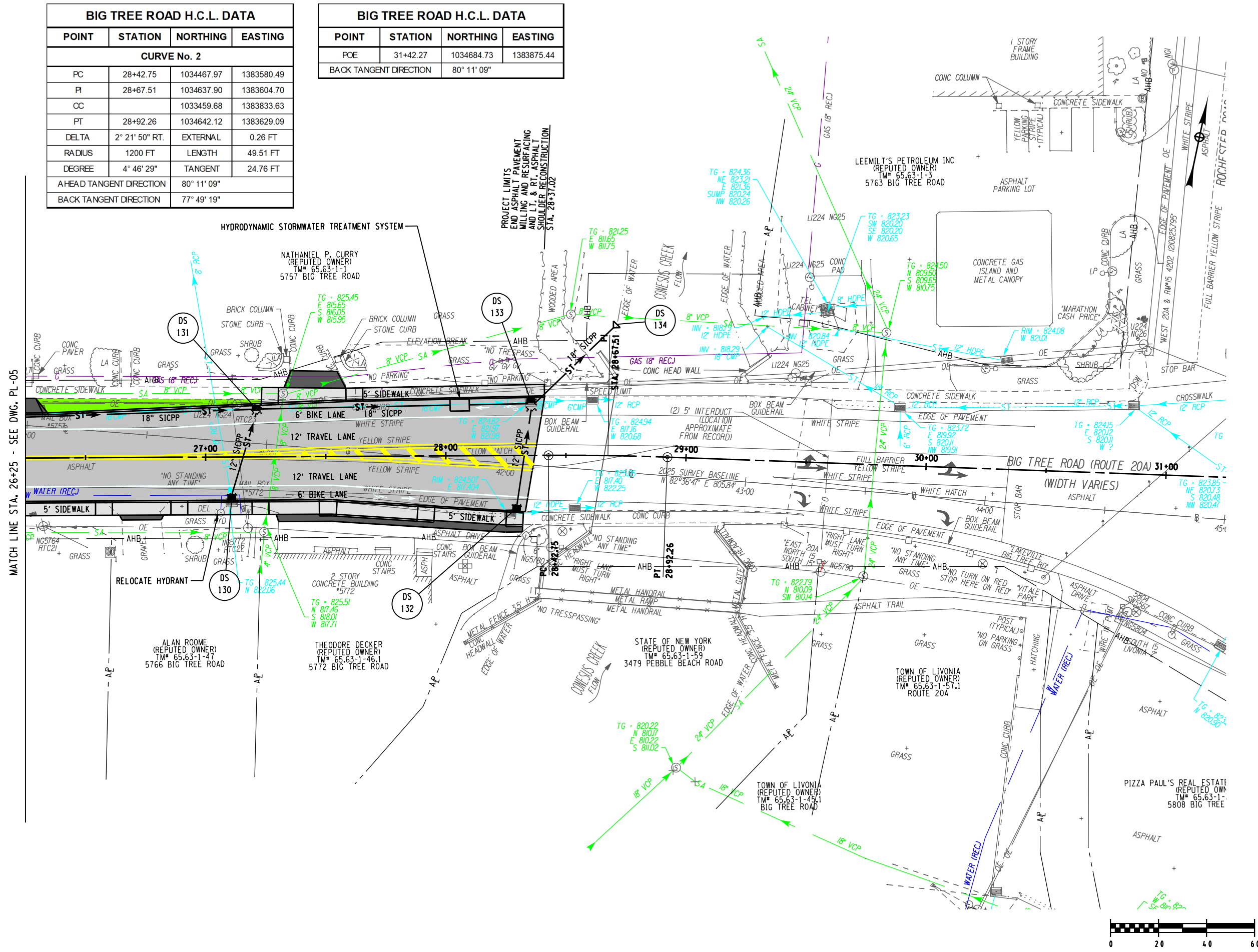
Lu Engineers
 ENVIRONMENTAL • TRANSPORTATION • CIVIL
 280 East Broad St., Suite 170
 Rochester, New York 14604
 (585) 385-7417
 luengineers.com

PROJECT:
 BIG TREE ROAD
 PEDESTRIAN IMPROVEMENT
 PROJECT
 PIN 4761.50

CLIENT:
 TOWN OF LIVONIA
 36 Commercial Street
 Livonia, NY 14487

DRAWING TITLE:
 PRELIMINARY
 ROADWAY PLANS

DESIGNED BY: JWO	SCALE: AS NOTED
DRAWN BY: HJL	DATE: JANUARY 2026
CHECKED BY: JRM	PROJECT No. 50631-01
SHEET 8 OF 11	DRAWING No. PL-06



FILE NAME = J:\Projects\50631_Town of Livonia\50631-01_Big Tree Road Pedestrian Improvements Project\Cadd\Preliminary Design\Preliminary Roadway Plan and Profile.dgn
 DATE = 1/19/2026 TIME = 10:26:38 AM
 USER = JOTTMAN

MATCH LINE STA. 26+25 - SEE DWG. PL-05

